

Requirements

Fabrics from the **Bookworm** collection:

Cushion 1

1. A548.1 - Book Covers in Greys & Black - fat $\frac{1}{4}$
2. A549.1 - Pages Grey on Cream - fat $\frac{1}{4}$
3. A550.1 - Books on Grey - fat $\frac{1}{4}$
4. A551.1 - Text on Cream - fat $\frac{1}{4}$
5. A552.3 - Book Shelves on Black $\frac{1}{2}$ yd - $\frac{1}{2}$ mtr
6. BB111 - Indigo - fat $\frac{1}{4}$
7. BB275 - Dark Golden Sand - fat $\frac{1}{4}$

1 cushion pad 22" x 22"

Wadding 24" x 24"

Cushion backing $\frac{3}{4}$ yd - 70cm

All measurements include $\frac{1}{4}$ " seam allowances; press each seam as you go.

Cutting

From fabric 1 cut

1 x 8 $\frac{1}{2}$ " x 8 $\frac{1}{2}$ " centre of block

From fabric 2 cut

2 x 5 $\frac{1}{4}$ " x 5 $\frac{1}{4}$ " cut in half diagonally twice (flying Geese block)

From fabric 3 cut

2 x 4 $\frac{7}{8}$ " x 4 $\frac{7}{8}$ " cut in half diagonally once (corner block)

From fabric 4 cut

2 x 5 $\frac{1}{4}$ " x 5 $\frac{1}{4}$ " cut in half diagonally twice (flying Geese block)

From fabric 5 cut

2 x 3 $\frac{1}{2}$ " x 16 $\frac{1}{2}$ " Side borders

2 x 3 $\frac{1}{2}$ " x 22 $\frac{1}{2}$ " top & bottom borders

From fabric 6 cut

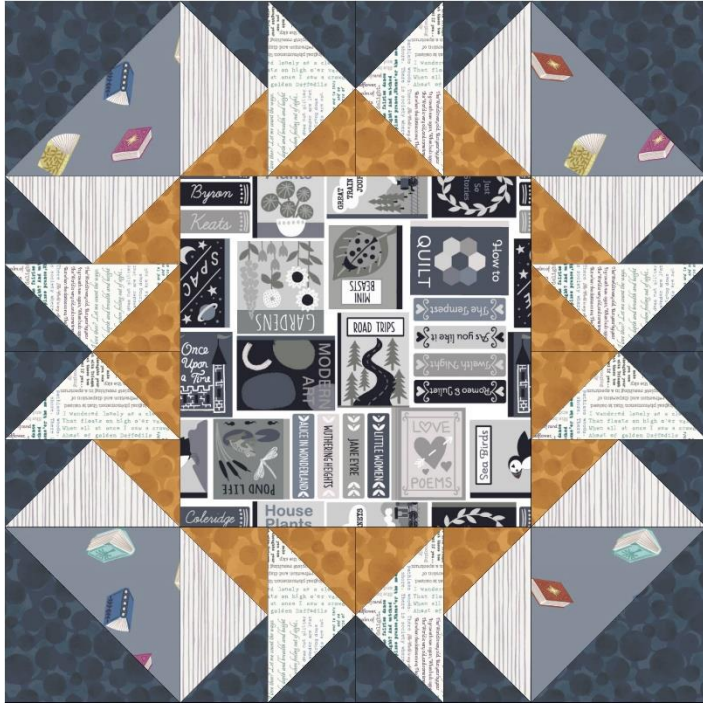
2 x 4 $\frac{7}{8}$ " x 4 $\frac{7}{8}$ " cut in half diagonally once (corner block)

8 x 2 $\frac{7}{8}$ " x 2 $\frac{7}{8}$ " cut in half diagonally once (Flying Geese block)

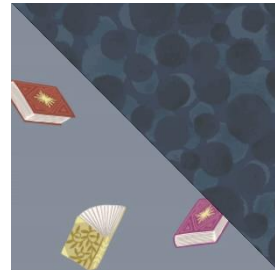
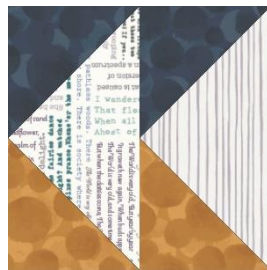
From fabric 7 cut

8 x 2⁷/₈" x 2⁷/₈" cut in half diagonally once (Flying Geese block)

Making up the cushion



Block diagram



Top left corner - Lay out for flying Geese - top right corner

Lay out the fabric pieces for the block. Stitch the two corner triangles together to make a square. Do this to all four.

Next the flying Geese blocks. Two small triangles and one large triangle.

With right sides together place a small triangle onto the larger triangle. Sew, press back and then the other side. 16 in total. Then sew two blocks together to make a square.

Lay out all the blocks as in the main block diagram. Sew in rows and then sew the rows together to complete the cushion centre.

Add the side strips press back, then the top and bottom.

Place cushion onto the wadding and quilt by hand or machine.

Cushion Back

Cut

1 x 12³/₄" x 22¹/₂"

1 x 12³/₄" x 22¹/₂"

- 1.** Make a double fold to wrong side along one long edge on each backing rectangle and stitch in place.
- 2.** Place cushion front right side up on work surface. Lay one backing rectangle right side down on top, aligning raw edges at bottom edge and sides. Add second backing rectangle on top right side down and aligning raw edges at top edge and sides. Pin in place. Folded edges should overlap by several inches at centre.
- 3.** Stitch around all four edges. Add line of zigzag stitches within seam allowance on all four edges for additional strength.
- 4.** Turn right side out and insert an 22" cushion pad.

Sally Ablett 2021©

Requirements

Fabrics from the **Bookworm** collection:

Cushion 1

1. A548.3 - Book Covers Multi Coloured - fat $\frac{1}{4}$
2. A549.2 - Pages Blue on Blue - fat $\frac{1}{4}$
3. A550.3 - Books on Dark Blue - fat $\frac{1}{4}$
4. A551.2 - Text on Parchment Pink - fat $\frac{1}{4}$
5. A552.1 - Book Shelves on Grey $\frac{1}{2}$ yd - $\frac{1}{2}$ mtr
6. BB269 - Mid Grey - fat $\frac{1}{4}$
7. BB20 - Black - fat $\frac{1}{4}$

1 cushion pad 22" x 22"

Wadding 24" x 24"

Cushion backing $\frac{3}{4}$ yd - 70cm

All measurements include $\frac{1}{4}$ " seam allowances; press each seam as you go.

Cutting

From fabric 1 cut

1 x 8 $\frac{1}{2}$ " x 8 $\frac{1}{2}$ " centre of block

From fabric 2 cut

2 x 5 $\frac{1}{4}$ " x 5 $\frac{1}{4}$ " cut in half diagonally twice (flying Geese block)

From fabric 3 cut

2 x 4 $\frac{7}{8}$ " x 4 $\frac{7}{8}$ " cut in half diagonally once (corner block)

From fabric 4 cut

2 x 5 $\frac{1}{4}$ " x 5 $\frac{1}{4}$ " cut in half diagonally twice (flying Geese block)

From fabric 5 cut

2 x 3 $\frac{1}{2}$ " x 16 $\frac{1}{2}$ " Side borders

2 x 3 $\frac{1}{2}$ " x 22 $\frac{1}{2}$ " top & bottom borders

From fabric 6 cut

2 x 4 $\frac{7}{8}$ " x 4 $\frac{7}{8}$ " cut in half diagonally once (corner block)

8 x 2 $\frac{7}{8}$ " x 2 $\frac{7}{8}$ " cut in half diagonally once (Flying Geese block)

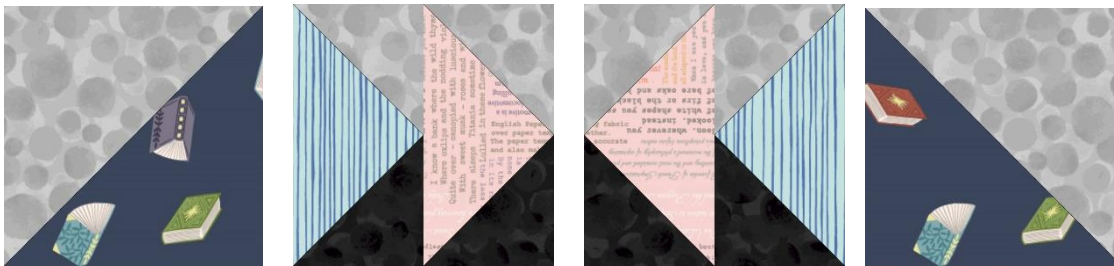
From fabric 7 cut

8 x 2 $\frac{7}{8}$ " x 2 $\frac{7}{8}$ " cut in half diagonally once (Flying Geese block)

Making up the cushion



Block diagram



Top left corner - Lay out for flying Geese - top right corner

Lay out the fabric pieces for the block. Stitch the two corner triangles together to make a square. Do this to all four.

Next the flying Geese blocks. Two small triangles and one large triangle.

With right sides together place a small triangle onto the larger triangle. Sew, press back and then the other side. 16 in total. Then sew two blocks together to make a square.

Lay out all the blocks as in the main block diagram. Sew in rows and then sew the rows together to complete the cushion centre.

Add the side strips press back and then the top and bottom.

Place cushion onto the wadding and quilt by hand or machine.

Cushion Back

Cut

1 x 12³/₄" x 22¹/₂"

1 x 12³/₄" x 22¹/₂"

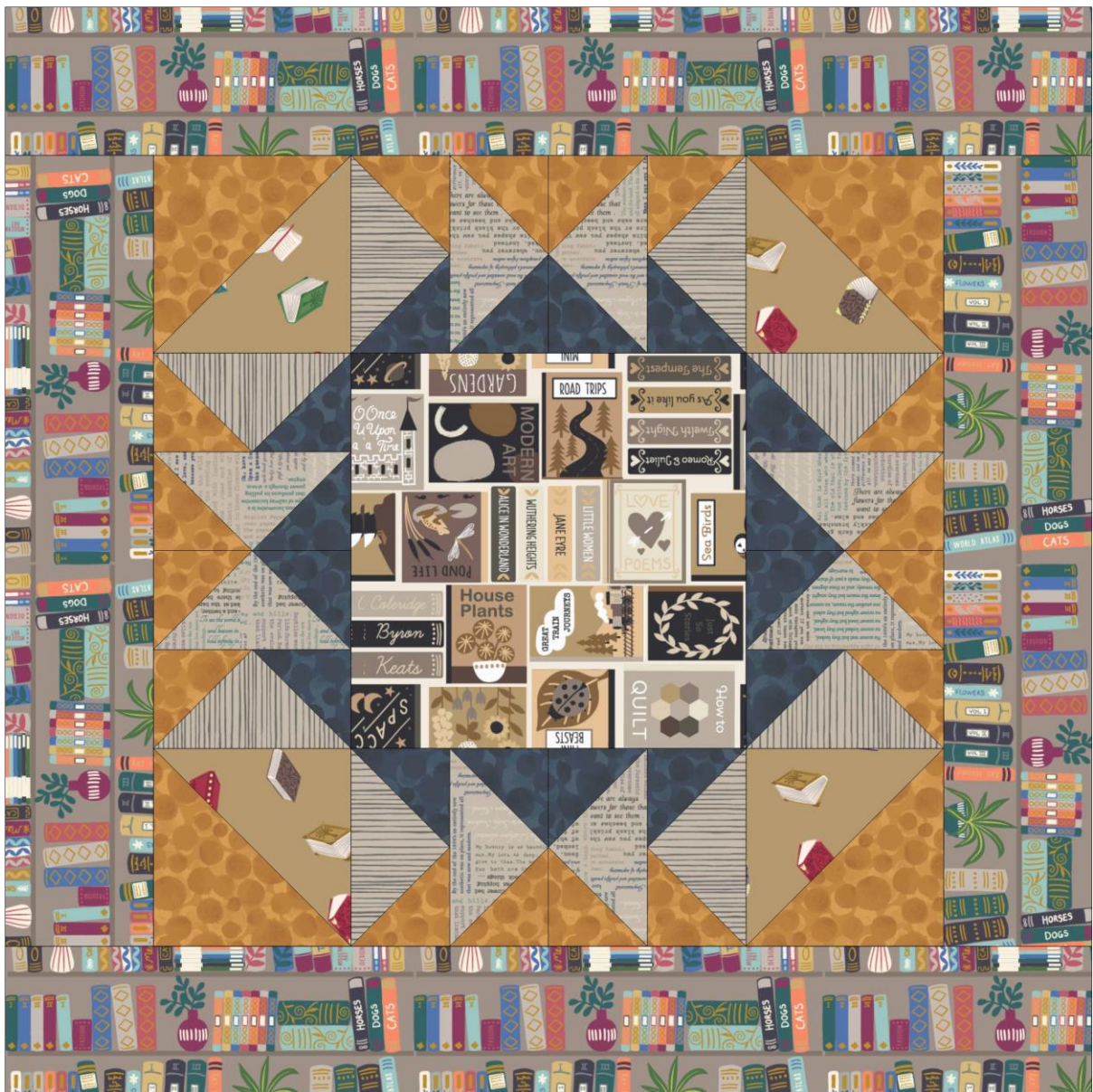
- 1.** Make a double fold to wrong side along one long edge on each backing rectangle and stitch in place.
- 2.** Place cushion front right side up on work surface. Lay one backing rectangle right side down on top, aligning raw edges at bottom edge and sides. Add second backing rectangle on top right side down and aligning raw edges at top edge and sides. Pin in place. Folded edges should overlap by several inches at centre.
- 3.** Stitch around all four edges. Add line of zigzag stitches within seam allowance on all four edges for additional strength.
- 4.** Turn right side out and insert an 22" cushion pad.

Sally Ablett 2021©



Designed and made by Sally Ablett - Cushion 3

Size 22" x 22"



Main Diagram

Requirements

Fabrics from the **Bookworm** collection:

Cushion 1

1. A548.2 - Book Covers in Sepia - fat $\frac{1}{4}$
2. A549.3 - Pages Brown on Beige - fat $\frac{1}{4}$
3. A550.2 - Books on Golden Brown - fat $\frac{1}{4}$
4. A551.3 - Text on Beige - fat $\frac{1}{4}$
5. A552.2 - Book Shelves on Warm Brown - $\frac{1}{2}$ yd- $\frac{1}{2}$ mtr
6. BB111 - Indigo - fat $\frac{1}{4}$
7. BB275 - Dark Golden Sand - fat $\frac{1}{4}$

1 cushion pad 22" x 22"

Wadding 24" x 24"

Cushion backing $\frac{3}{4}$ yd - 70cm

All measurements include $\frac{1}{4}$ " seam allowances; press each seam as you go.

Cutting

From fabric 1 cut

1 x 8 $\frac{1}{2}$ " x 8 $\frac{1}{2}$ " centre of block

From fabric 2 cut

2 x 5 $\frac{1}{4}$ " x 5 $\frac{1}{4}$ " cut in half diagonally twice (flying Geese block)

From fabric 3 cut

2 x 4 $\frac{7}{8}$ " x 4 $\frac{7}{8}$ " cut in half diagonally once (corner block)

From fabric 4 cut

2 x 5 $\frac{1}{4}$ " x 5 $\frac{1}{4}$ " cut in half diagonally twice (flying Geese block)

From fabric 5 cut

2 x 3 $\frac{1}{2}$ " x 16 $\frac{1}{2}$ " Side borders

2 x 3 $\frac{1}{2}$ " x 22 $\frac{1}{2}$ " top & bottom borders

From fabric 6 cut

2 x 4 $\frac{7}{8}$ " x 4 $\frac{7}{8}$ " cut in half diagonally once (corner block)

Place cushion onto the wadding and quilt by hand or machine.

Cushion Back

Cut

1 x 12³/₄" x 22¹/₂"

1 x 12³/₄" x 22¹/₂"

- 1.** Make a double fold to wrong side along one long edge on each backing rectangle and stitch in place.
- 2.** Place cushion front right side up on work surface. Lay one backing rectangle right side down on top, aligning raw edges at bottom edge and sides. Add second backing rectangle on top right side down and aligning raw edges at top edge and sides. Pin in place. Folded edges should overlap by several inches at centre.
- 3.** Stitch around all four edges. Add line of zigzag stitches within seam allowance on all four edges for additional strength.
- 4.** Turn right side out and insert an 22" cushion pad.

Sally Ablett 2021©